



LIGHTING • FIRE & CO DETECTION



KM 792789
KM 792788
BS EN14604:2005
BS 5446-2:2003

MODEL: HSA/PH/10

STANDALONE LONGLIFE LITHIUM BATTERY POWERED COMBI SMOKE/HEAT ALARM

MAIN FEATURES:

- Powered by 10 Year Sealed Lithium Battery
- Optical sensor for slow smoldering fires.
- Thermistor sensor for Heat detection
- Power / Alarm Test Button
- Hush Feature
- Low Battery Warning.
- Supplied with wall plugs and screws
- Loud 85dB Alarm Signal
- Fault signal

This instruction leaflet contains important information on the correct installation and operation of your fire alarm. Read this leaflet fully before attempting installation and retain for future reference.

SPECIFICATION

Power Source:	3V Lithium battery
Operation	0°C-40°C
Temperature: Ambient	10%-90%
Humidity: Alarm Sound	85 Decibels at 3 metres
Level: Battery Life:	10-years (Sealed)
Smoke Sensitivity:	0.08-0.2db/m
Heat alarm activation:	60°C (Fixed)
Certified to:	BS EN14604:2005 BS 5446-2:2003

PRODUCT DESCRIPTION

HSA/PH/10 is a multi-sensor fire alarm that detects a wide range of fires. It contains a smoke sensor for detecting slow smoldering fire and a heat sensor for detecting fire. It is ideal for hallway, landing, bedroom and open plan living areas.

All the fire alarms should be interconnected to ensure the early warning will be heard, particularly by somebody sleeping. A properly designed early warning fire system ensures the alarm is given before the escape routes become blocked with smoke.

LOCATING THE FIRE ALARM

- Single Story** Fit at least one alarm in a corridor / hallway. Place it near to the living areas to ensure the audible alarm can be heard when the bedrooms are occupied. See Figure 1 for examples.
- Multi Story** Fit at least one alarm at the bottom of the staircase with further alarms fitted on each upstairs landing. This includes basements but excludes crawl spaces and unfinished attics. See Figure 2 for examples.

Note: Fit an alarm in every room for maximum protection. (except kitchen, bathroom and garage)

FIGURE 1 – SINGLE STORY DWELLING

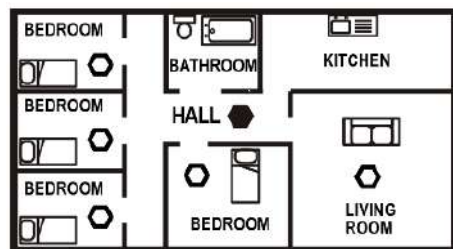
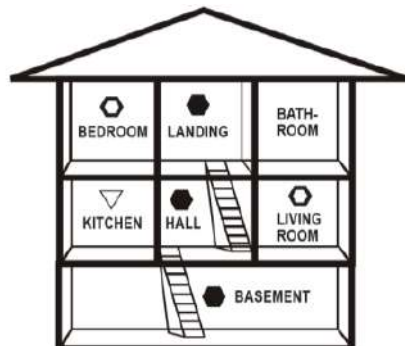


FIGURE 2 – 2/3 STORY DWELLING



KEY ○ MAXIMUM PROTECTION (SMOKE)
● MINIMUM PROTECTION (SMOKE)
▽ MAXIMUM PROTECTION (HEAT)

Location	GNS-2369X Fire Alarm
Hall, Corridors, Escape routes	✓
Kitchens / Garages	X
Living Rooms	✓
Bedrooms	✓
Shower / Bathrooms	X

Areas to be avoided include the following:

- Situations where the temperature may fall below 0°C or rise above 40°C for extended periods
- Humid areas such as bathrooms, kitchens and shower rooms where the relative humidity may exceed 90%
- Near a decorative object, door, light fitting, window moulding etc., that may prevent smoke from entering the alarm.
- Fume filled environments such as garages. Exhaust gases may cause false alarms.
- Adjacent to or directly above hot components such as radiators or wall vents that can affect the direction of air currents.
- In very dusty or dirty environments such as workshops.
- Locate unit at least 1.5m and route wiring at least 1m away from fluorescent light fittings as electrical "noise" and/or flickering may affect the unit. Do not wire into the same circuit as fluorescent lights or dimmers.
- Do not locate in insect infested areas. Insects and contamination on the Smoke Alarm sensor can increase its response time.

POSITIONING THE FIRE ALARM

Ceiling Mounting

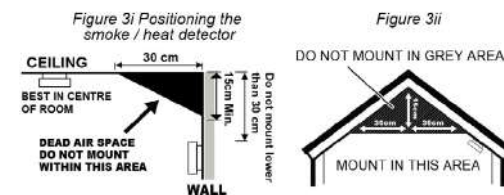
As hot smoke rises and spreads out, it is advisable to mount on a ceiling in a central position. Avoid areas where there is no air circulation. E.g. Corners of rooms and keep away from items which may prevent the free flow of air. Place the unit at least 300mm from and light fitting or decorative object which might obstruct smoke entering the alarm. Keep at least 300mm away from walls. See Figure 3i.

Wall Mounting

Do not mount tight into the corners. Put the top edge of your fire alarm between 150 and 300mm below the ceiling. Keep at least 300mm from room corners. See Figure 3i

On a Sloping Ceiling

In areas with sloping or peaked ceilings install your alarm 900mm from the highest point measured horizontally because "dead air" at the apex may prevent smoke from reaching the unit. See Figure 3ii.



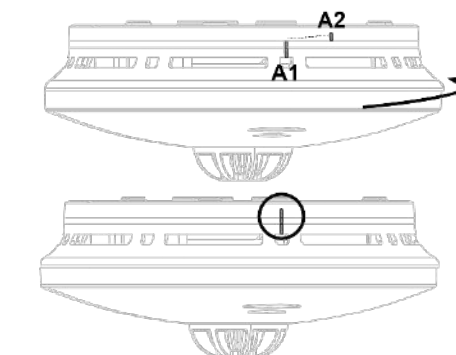
INSTALLING THE FIRE ALARM

This smoke alarm is powered by battery and requires no additional wiring.

To fix the mounting base into position

- Having established the mounting location ensure that there are no electrical wiring or pipe work in the area adjacent to the mounting surface.
- Take the mounting bracket and mark the two mounting hole locations.
- Drill holes in the positions marked.
- Insert wall plugs into the drilled holes.
- Screw mounting bracket to mounting surface. DO NOT OVER TIGHTEN.

Assemble detector onto the mounting plate by aligning the two projections (A1) and (A2) on the mounting plate with the two keyhole slots in the detector.



Lock in position by giving a clockwise quarter turn. This clockwise turn can switch on the sealed-in battery at the same time. i.e. power on the device simultaneously.

- Test the alarm for correct operation using test button.

OPERATING YOUR FIRE ALARM

Once the fire alarm has been installed a small indicator light (LED), positioned beside the test button, should flash approx once a minute in normal operation. If smoke or heat is detected the unit will emit a loud pulsating alarm until the air is clear.

TESTING YOUR FIRE ALARM

It is recommended that you test your fire alarm once a week to ensure the detector is working correctly. Push and hold the test button for approximately 3 seconds. A loud pulsating alarm should sound and a RED indicator light (LED) will flash at the same time.

After installation and after reoccupation of the dwelling following a vacation etc, check all your alarms.

COMMON CAUSES AND AVOIDANCE OF FALSE ALARMS

The fire alarm may be triggered by steam, condensation, normal smoke or fumes. Small insects getting into the smoke alarm chamber may cause intermittent alarms. Keep away from the sources to avoid nuisance alarms. (See "Areas to be avoided" in the "Positioning the fire alarm" section.)

HUSH OR SILENCE FEATURE

This fire alarm has a built-in Hush or Silence feature incorporated into the Test button. If cooking or other non-hazardous sources cause the unwanted alarm, it can be temporarily silenced by pressing the test button and holding for approximately 3 seconds. The red LED will flash every 10 seconds to indicate the sensitivity is reduced. At the end of the hush period the alarm will give two short beeps, the alarm will then reset to normal sensitivity.

NOTE - If the smoke density increases during this period (i.e. from a fire) the unit will go into alarm mode.

NOTE – If the heat reaches 60°C in this period the alarm will trigger

LOW BATTERY WARNING

If the fire alarm emits a short 'beep' once every 40 seconds, the battery is at the end of its life. This low voltage warning will be given for at least 30 days.

If the red indicator light (LED) does not flash every 40 seconds then replace the whole smoke alarm unit.

BATTERY SEALED-IN NOT FOR REPLACEMENT

ACTION IN THE EVENT OF A FALSE ALARM

- If there is a false alarm, simply press the test / hush button on the cover to mute the unit for 10 minutes.
- Check the house carefully in case there is a small fire smouldering somewhere.
- Check whether there are some sources of smoke or fumes. You should get your family into a safe place before your investigation.
- If there are frequent nuisance/ false alarms it may be necessary to re-locate the device. If for some reasons the alarm continues to give false alarm, please contact your supplier. If cleaning the alarm does not correct the problem it can be returned to the place where you bought it.

IN THE EVENT OF FIRE

- Leave the building as quickly as possible. Check room doors for heat or smoke. Do not open a hot door. Use an alternate escape route.
- Crawl along the floor, if possible, breathe through a wet cloth or hold your breath. Do not stop to collect anything.
- Meet at a pre-arranged meeting place outside the dwelling and check everybody is there.
- Call the Fire Brigade from outside the building immediately. The brigade should be summoned regardless of the size of the fire and regardless of whether there is a facility for transmission of alarms to a remote manned centre.
- Do not go back inside a burning building and wait for the Fire Brigade to arrive.

MAINTAINING YOUR FIRE ALARM

Clean your fire alarm at least once every six months to prevent dust build up. This can be done using a vacuum cleaner with the brush attachment. Clean gently around the front grilled section and sides.

WARNING: THE APPARATUS SHALL NOT BE EXPOSED TO DRIPPING OR SPLASHING AND NO OBJECTS FILLED WITH LIQUIDS, SUCH AS VASES, SHALL BE PLACED ON THE APPARATUS.

SUMMARY

! IMPORTANT ! GO TO CHECK THE STATUS OF EACH UNIT WHEN THEY ARE IN ALARM WITH RESPECT TO THE FOLLOWING TABLE:

Fire Warning	• Alarm sounds and the red LED is blinking rapidly.
Low Battery Warning	• One audible beep every 40 to 60 seconds. • Press the silence feature button to activate the silence mode of unit itself for 10 hours
Fault Warning	• Two audible beeps every 40 to 60 seconds. • Press the silence feature button to activate the silence mode of unit itself for 10 hours

IMPORTANT SAFEGUARDS

- Installation of your fire alarm is only one step in your safety plan. Other important steps should be taken to further improve your safety:-
- Install the fire alarm properly, following this instruction leaflet
 - Test your fire alarm weekly
 - Replace with a new fire alarm immediately once depleted
 - Do not smoke in bed
 - Keep matches & lighters away from children
 - Store flammable materials in a proper manner and never use them near naked flames or sparks
 - Maintain emergency equipment such as Fire Extinguishers, escape ladders etc and ensure all occupants know how to use them correctly.
- Plan an escape route/s from your building in advance and ensure all occupants are aware of them. Re-enforce this awareness periodically through-out the year.
- Make sure escape routes remain free of any obstructions.

THIS PRODUCT IS A SEALED UNIT AND CANNOT BE REPAIRED – IF THE UNIT IS TAMPERED WITH IT WILL INVALIDATE THE WARRANTY. IF THE UNIT IS FAULTY PLEASE RETURN IT TO YOUR ORIGINAL SUPPLIER WITH YOUR PROOF OF PURCHASE.

WARNING: IF THERE IS ANY QUESTION AS TO THE CAUSE OF AN ALARM IT SHOULD BE ASSUMED THAT THE ALARM IS DUE TO AN ACTUAL FIRE AND THE DWELLING SHOULD BE EVACUATED IMMEDIATELY.

YOUR FIRE ALARM WARRANTY

These fire alarms are warranty to be free from defects in materials and workmanships under normal use and service for a period of five (5) years from date of purchase. The company will not be obligated to repair or replace parts which are found to be in need of repair because of misuse, damage or alterations occur after the date of purchase. Send the fire Alarm with proof of purchase, postage and return postage prepaid, to local distributor. The liability of the company arising from the sale of this fire alarm shall not in any case exceed the cost of replacement of fire alarm and in no case shall the company be liable for consequential loss or damages resulting from the failure of the fire alarm.

HISPEC ELECTRICAL PRODUCTS LTD. SHALL HAVE NO LIABILITY FOR ANY PERSONAL INJURY OR PROPERTY DAMAGE, OR ANY SPECIAL INCIDENTAL, CONTINGENT OR CONSEQUENTIAL DAMAGE OF ANY KIND RESULTING FROM A FIRE. THE EXCLUSIVE REMEDY FOR BREACH OF THE LIMITED WARRANTY CONTAINED HEREIN IS THE REPAIR OR REPLACEMENT OF THE DETECTIVE PRODUCT AT HISPEC ELECTRICAL PRODUCTS LTD. OPTION. IN NO CASE SHALL HISPEC ELECTRICAL PRODUCTS LTD.'S LIABILITY UNDER ANY OTHER REMEDY PRESCRIBED BY LAW EXCEED THE PURCHASE PRICE. YOUR ALARM IS NOT A SUBSTITUTE FOR PROPERTY, DISABILITY, LIFE OR OTHER INSURANCE OF ANY KIND. APPROPRIATE COVERAGE IS YOUR RESPONSIBILITY. CONSULT YOUR INSURANCE AGENT.

This does not affect your statutory rights. This alarm is only suitable for single occupancy private dwellings only and not intended for multi occupancy private dwellings or commercial or industrial dwellings.

Waste electrical products should not be disposed of with normal household waste. Please recycle where facilities exist. Check with your Local Authority or retailer for recycling advice. New regulation will encourage the recycling of Waste from Electrical and Electronic Equipment (European "WEEE Directive" effective August 2005).

**Manufacturer: Hispec Electrical Products Ltd.
Chorley North Business Park
Chorley Lancashire
PR6 7BX**

