

ORCA SWITCH LED WALL PACK

P/C: HSLEDWP/PC

MAIN FEATURES:

- 4 Wattage Adjustable
- 3CCT
- IP65 Rated
- IK10 Rated
- 5 Year Guarantee
- Polycarbonate Body & Diffuser
- Fast Fix
- 1 Year On Site Warranty
- Available with Emergency & Photocell

This luminaire must be installed and operated in full accordance with the information contained in this document. Failure to do so, will invalidate any warranty.

Installation must be carried out by a qualified professional and follow relevant Safety Standards, Wiring and Building Regulations.



WARNING

Switch off power before installation!

Switch power supply back on after install & circuit examination.

Professional electrician required for installation & maintenance.



1.

POWER OFF

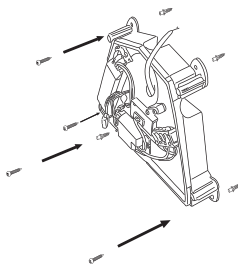
Remove front cover.

First remove the 4no. hex screws securing the cover.

IMPORTANT - Disconnect the wiring plug between front cover and gear tray before completely removing cover from base.

3.

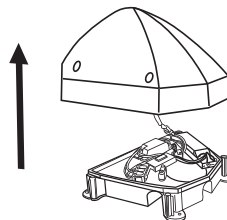
With supply wiring provided upto the mounting point, feed cable through the base then secure the body to the mounting surface.



2.

Select a suitable mounting surface.

The Orca SWITCH Wall Pack is designed to be wall mounted with side or rear cable entry. Housing is designed to accept a BESA wiring box and channels for 20mm conduit.



4.

Make electrical connection to the terminal block, carefully observing the polarity as marked.

N= Neutral

⏏ = Earth, to terminal only not required for function

L= Switch Live

L1= Permanent Live for use on Emergency version

Standard installation. Default Factory Settings = 12Watt (1200lm) & 4000K

5.

Switch to the required output wattage by using the dip switches on the driver output.

PIN 1	PIN 2	WATTS
OFF	OFF	14
ON	OFF	17
OFF	ON	21
ON	ON	24

7.

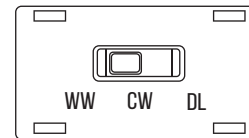
Re-connect plug from front cover to gear tray then refit front cover, using 4no. hex screws.

Turn on power

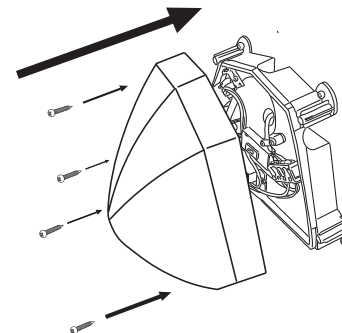
6.

Switch to the required colour temperature by using the switch on the gear tray.

*Default Setting



WW = 3000K
CW = 4000K*
DL = 6500K



9.

Photocell Operation

Orca SWITCH is supplied complete with a photocell for automatic switching on/off at dusk & dawn.

Ambient lighting level

10–25 Lux = On

40–55 Lux = Off

Photocell can be disabled by disconnecting the plug with black/red wires.

10.

Emergency Versions

Connect unswitched live supply to L1.

Connect plug with 2 white & 1 grey cable from battery to terminal on emergency module marked BAT.

Connect plug with 1 red & 1 grey cable from front cover to terminal on emergency module marked TB IND.

IMPORTANT OPERATION NOTES!

Orca SWITCH Wall Pack is fitted with photocell control as standard, this can be disabled by disconnecting the plug with red & black 2 core cable from front cover to gear tray.

With photocell disabled, there will be a < 10 second delay from switching power to illumination

- Emergency versions require min 24 hours charge for battery to reach capacity to 3hr duration achieve.

ORCA SWITCH LIMITED WARRANTY

This device is in warranty under normal use and service for a period of 5 years from date of purchase. The company will not be obligated to repair or replace parts which are found to be in need of repair because of misuse, damage or alterations that have occurred after the date of purchase. Send the product with proof of purchase, postage and return postage prepaid, to your local distributor. The liability of the company arising from the sale of this product shall not in any case exceed the cost of replacement of alarm and in no case shall the company be liable for consequential loss or damages resulting from the failure of the product.

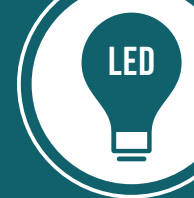
HISPEC ELECTRICAL PRODUCTS LTD. SHALL HAVE NO LIABILITY FOR ANY PERSONAL INJURY OR PROPERTY DAMAGE, OR ANY SPECIAL INCIDENTAL, CONTINGENT OR CONSEQUENTIAL DAMAGE OF ANY KIND RESULTING FROM A FIRE. THE EXCLUSIVE REMEDY FOR BREACH OF THE LIMITED WARRANTY CONTAINED HEREIN IS THE REPAIR OR REPLACEMENT OF THE DEFECTIVE PRODUCT AT HISPEC ELECTRICAL PRODUCTS LTD. OPTION. IN NO CASE SHALL HISPEC ELECTRICAL PRODUCTS LTD.'S LIABILITY UNDER ANY OTHER REMEDY PRESCRIBED BY LAW EXCEED THE PURCHASE PRICE. YOUR PRODUCT IS NOT A SUBSTITUTE FOR PROPERTY, DISABILITY, LIFE OR OTHER INSURANCE OF ANY KIND. APPROPRIATE COVERAGE IS YOUR RESPONSIBILITY. CONSULT YOUR INSURANCE AGENT.



This does not affect your statutory rights. Waste electrical products should not be disposed of with normal household waste. Please recycle where facilities exist. Check with your Local Authority or retailer for recycling advice. New regulation will encourage the recycling of Waste from Electrical and Electronic Equipment (European "WEEE Directive" effective August 2005).



LIGHTING • FIRE & CO DETECTION



INSTALLATION MANUAL

ORCA SWITCH LED WALL PACK
WITH PHOTOCELL

HSLEDWP/PC

For further assistance, visit www.hispec.co.uk
or contact customer services on 01257 262197