



BS EN54-5



## MODEL: HSA/BH

### BATTERY OPERATED HEAT DETECTOR

#### MAIN FEATURES:

- 2x AAA Batteries included
- Loud 85db alarm signal
- Low Battery signal
- Malfunction alarm warning
- Test / Hush button
- Supplied with fixing kit

This instruction leaflet contains important information on the correct installation and operation of your alarm. Read this leaflet fully before attempting installation and retain for future reference.

#### SPECIFICATION

Power Source:	2x AAA (batteries included)
Alarm activation temp:	54 - 70°C
Alarm frequency:	<3.5 KHZ
Standby current:	<10µA
Working current:	≤120mA
Alarm Sound Level:	85 Decibels at 3 metres
Approval:	Certified to BS EN54-5
EMC Directive:	EN61000-6-3:2007 +A1:2011 EN50130-4:2011

#### PRODUCT DESCRIPTION

Heat Alarms are intended to be supplementary to Smoke Alarms and should only be placed in areas where smoke alarms cannot be used.

**Note:** This alarm cannot be connected to any other device such as a fire alarm panel.

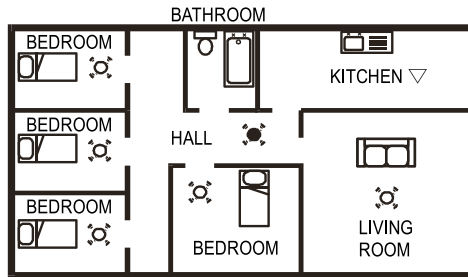
All alarms should be interconnected to ensure the early warning will be heard, particularly by somebody sleeping. A properly designed early warning fire system ensures the alarm is given before the escape routes become blocked with smoke.

This Heat alarm gives a fire warning when the temperature at the unit reaches 60°C. It is ideal for kitchens, garages, cellars, boiler rooms, attics and other areas where there are normally high levels of fumes, smoke or dust which preclude the use of smoke alarms due to the risk of false alarms.

#### LOCATING THE HEAT ALARM

If your dwelling is on a single story, for minimum protection you should fit an alarm in a corridor or hallway between the sleeping and living areas (incl. Kitchens). Place it as near to the living areas as possible and ensure the audible alarm can be heard when the bedrooms are occupied. See **Figure 1** for examples.

FIGURE 1 - SINGLE STORY DWELLING



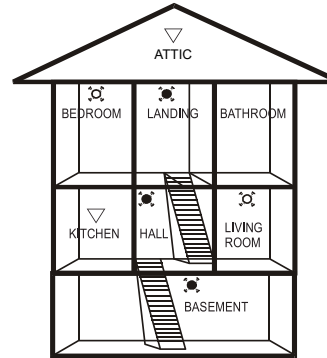
If your dwelling is multi-story, for minimum protection one alarm should be fitted at the bottom of the staircase with further alarms fitted on each upstairs landing. This includes basements but excludes crawl spaces and unfinished attics. See **Figure 2** for examples.

**NOTE:** For maximum protection smoke alarms should be fitted in every room (except kitchen, bathroom and garage).

#### POSITIONING THE HEAT ALARM

As hot air rises and spreads, it is advisable to mount on a ceiling in a central position. Avoid areas where there is no air circulation. E.g. Corners of rooms and keep away from items which may prevent the free flow of air. Place the unit at least 300mm from any light fittings or decorative objects which might obstruct smoke entering the alarm. Keep at least 300mm away from walls. See **Figure 3i**.

FIGURE 2 - 2/3 STORY DWELLING



#### KEY

- ◻ MAXIMUM PROTECTION (SMOKE)
- ▽ MAXIMUM PROTECTION (HEAT)
- MINIMUM PROTECTION (SMOKE)

#### Wall Mounting

Do not mount tight into the corners. Put the top edge of your alarm between 150 and 300mm below the ceiling. Keep at least 300mm from room corners. See **Figure 3i**

#### On a Sloping Ceiling

In areas with sloping or peaked ceilings install your alarm in accordance with **Figure 3ii** because "dead air" at the apex may not allow hot air to adequately enter the alarm.

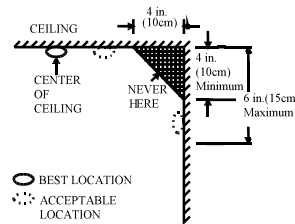


Figure 3ii

DO NOT MOUNT IN GREY AREA

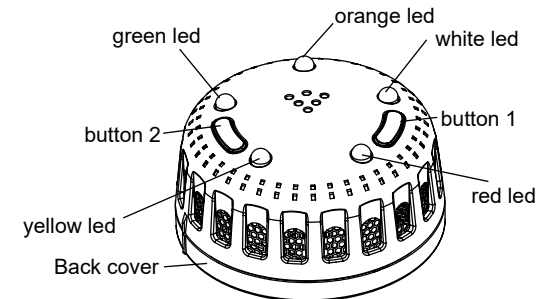


#### AREAS TO BE AVOIDED:

- Situations where the temperature may fall below 4°C for extended periods
- Humid areas such as BATHROOMS, SHOWER ROOMS where the relative humidity may exceed 90% as vapour will cause false alarms.
- Near a DECORATIVE OBJECT, DOOR, LIGHT FITTING, WINDOW MOULDING etc., that may prevent hot air from entering the alarm.
- In VERY DUSTY OR DIRTY environments such as workshops.
- Locate unit at least 1.5m from FLUORESCENT LIGHT FITTINGS as electrical "noise" and/or flickering may affect the unit.
- Do not locate in INSECT INFESTED AREAS. Insects and contamination on the alarm sensor can increase its response time.

#### TESTING YOUR HEAT ALARM

It is recommended that you test your alarm once a week to ensure the detector is working correctly. Push and hold the test button for approximately 3 seconds. A loud pulsating alarm should sound and a RED indicator light (LED) will flash at the same time.



## ALARM AND SOUND INDICATORS

<b>BUTTON 1 (TEST BUTTON):</b>	Press the test button, the detector will alarm 4 times, and the red LED will flash 4 times, in hush mode, the detector will alarm 3 times and the red LED will flash 3 times.
<b>BUTTON 2 (HUSH BUTTON):</b>	In the temperature range 54 - 70°, the detector will alarm with 2Hz frequency, and the red LED will flash with a 2Hz frequency. At this time press button 2 once and the detector will silence, the red LED will not light up and the alarm will be in hush mode for 9mins.
<b>GREEN LED (POWER INDICATOR LIGHT):</b>	The green LED flashes once every 50 seconds in normal operation.
<b>YELLOW LED (FAULT INDICATOR LIGHT):</b>	When a fault has occurred, the yellow LED will flash once every 50 seconds.
<b>RED LED (ALARM INDICATOR LIGHT):</b>	If the temperature range is 54 -70°, the red LED will flash with 2Hz frequency.
<b>WHITE LED (LOW BATTERY INDICATOR LIGHT):</b>	When battery voltage is less than 2.6V(±0.1V), the white LED will flash once every 50 seconds and the detector will "beep" once.
<b>ORANGE LED (LIFE EXPIRED INDICATOR LIGHT):</b>	When the life of the detector exceeds 10 years, the orange LED will flash once every 50 seconds.
<b>HIGH TEMP ALARM</b>	In the temperature range is 54 -70°, the red LED will flash and the buzzer will sound with 2Hz frequency

The heat alarm matching with wireless base, when the wireless base lights flashing, the buzzer will alarming.

### MAINTAINING YOUR HEAT ALARM

Clean your alarm at least once every six months to prevent dust build up. This can be done using a vacuum cleaner with the brush attachment. Clean gently around the front grilled section and sides.

**WARNING:** The apparatus shall not be exposed to dripping or splashing and no objects filled with liquids, such as vases, shall be placed on the apparatus.

## BATTERY REPLACEMENT

Test the alarm for correct operation using the test facility whenever the battery is replaced.

**WARNING: DANGER OF EXPLOSION IF BATTERY IS INCORRECTLY REPLACED. THE USE OF BATTERIES OTHER THAN THOSE RECOMMENDED ON THE BACK OF THE SMOKE ALARM MAY BE DETRIMENTAL TO ITS OPERATION.**

### LIMITATIONS OF THE HEAT ALARM

Heat alarms are not designed to protect life safety against fire and smoke. In most fires, hazardous levels of toxic gases and smoke can build up before the heat alarm will operate. Heat alarms should only be used to provide an added source of protection.

Heat alarms cannot provide an alarm if heat does not reach the unit. Therefore, heat alarms may not sense fires starting in chimneys, walls, on roofs, on the other side of a closed door or on a different floor. Home fires develop in different ways and are often unpredictable.

### IMPORTANT SAFEGUARDS

Installation of your alarm is only one step in your safety plan. Other important steps should be taken to further improve your safety:

- Install the alarm properly, following this instruction leaflet
- Test your alarm weekly
- Do not smoke in bed
- Keep matches & lighters away from children
- Store flammable materials in a proper manner and never use them near naked flames or sparks
- Maintain emergency equipment such as Fire Extinguishers, escape ladders etc and ensure all occupants know how to use them correctly.
- Plan an escape route/s from your building in advance and ensure all occupants are aware of them. Re-enforce this awareness periodically through-out the year.
- Make sure escape routes remain free of any obstructions.

**WARNING:** IF THERE IS ANY QUESTION AS TO THE CAUSE OF AN ALARM IT SHOULD BE ASSUMED THAT THE ALARM IS DUE TO AN ACTUAL FIRE AND THE DWELLING SHOULD BE EVACUATED IMMEDIATELY.

## ALARM LIMITED WARRANTY

This alarm is in warranty under normal use and service for a period of 5 years (excluding battery) from date of purchase. The company will not be obligated to repair or replace parts which are found to be in need of repair because of misuse, damage or alterations occur after the date of purchase. Send the alarm with proof of purchase, postage and return postage prepaid, to local distributor. The liability of the company arising from the sale of this alarm shall not in any case exceed the cost of replacement of alarm and in no case shall the company be liable for consequential loss or damages resulting from the failure of the alarm.

HISPEC ELECTRICAL PRODUCTS LTD. SHALL HAVE NO LIABILITY FOR ANY PERSONAL INJURY OR PROPERTY DAMAGE, OR ANY SPECIAL INCIDENTAL, CONTINGENT OR CONSEQUENTIAL DAMAGE OF ANY KIND RESULTING FROM A FIRE. THE EXCLUSIVE REMEDY FOR BREACH OF THE LIMITED WARRANTY CONTAINED HEREIN IS THE REPAIR OR REPLACEMENT OF THE DETECTIVE PRODUCT AT HISPEC ELECTRICAL PRODUCTS LTD. OPTION. IN NO CASE SHALL HISPEC ELECTRICAL PRODUCTS LTD.'S LIABILITY UNDER ANY OTHER REMEDY PRESCRIBED BY LAW EXCEED THE PURCHASE PRICE. YOUR ALARM IS NOT A SUBSTITUTE FOR PROPERTY, DISABILITY, LIFE OR OTHER INSURANCE OF ANY KIND. APPROPRIATE COVERAGE IS YOUR RESPONSIBILITY. CONSULT YOUR INSURANCE AGENT.

This does not affect your statutory rights. This alarm is only suitable for residential dwellings and is not suitable for commercial or industrial use.

Waste electrical products should not be disposed of with normal household waste. Please recycle where facilities exist. Check with your Local Authority or retailer for recycling advice. New regulation will encourage the recycling of Waste from Electrical and Electronic Equipment (European "WEEE Directive" effective August 2005).



# LOOKING FOR FIRE & CO PROTECTION FOR YOUR HOME?



## SMOKE ALARMS

## HEAT ALARMS

## CARBON MONOXIDE DETECTORS

---

CHECK OUT OUR FULL RANGE OF FIRE & CO DETECTION PRODUCTS!

# HISPEC.CO.UK